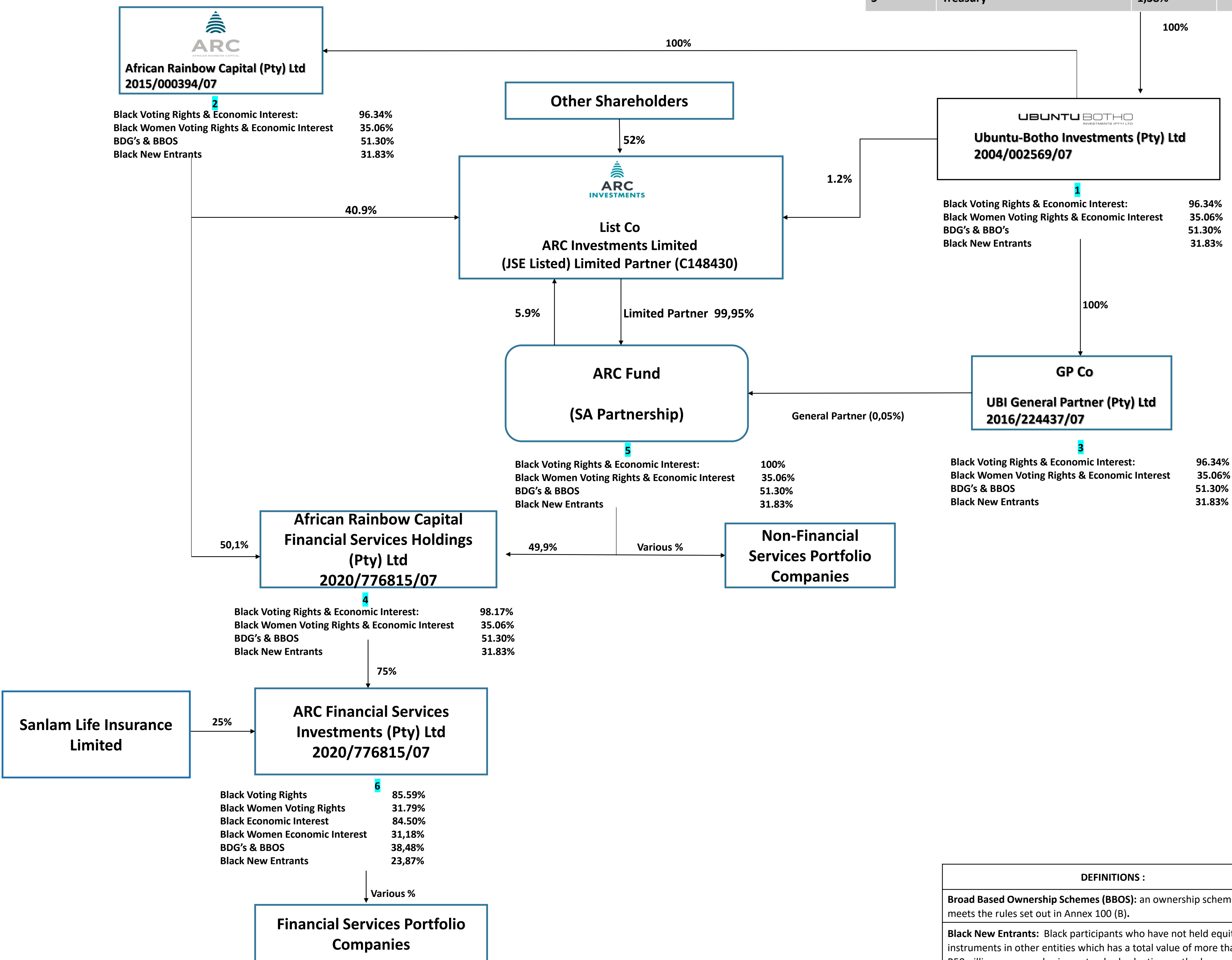


UBUNTU-BOTHO INVESTMENTS- B-BBEE STRUCTURE (July 2021)

Count	Shareholder	Issued Shares	Ordinary Shares
1	55% - Sizanani- Thusang- Helpmekaar Investments (Pty Ltd	53,25%	66,04%
2	20% - Sanlam Ubuntu- Botho Community Development Trust	19,36%	
3	25% - B-BBEE Groups	22,68	29,84%
4	Non B-BBEE	3,33%	4,12%
5	Treasury	1,38%	



Black Voting Rights & Economic Interest: 96.34%
Black Women Voting Rights & Economic Interest: 35.06%
BDG's & BBOS: 51.30%
Black New Entrants: 31.83%

Black Voting Rights & Economic Interest: 96.34%
Black Women Voting Rights & Economic Interest: 35.06%
BDG's & BBO's: 51.30%
Black New Entrants: 31.83%

Black Voting Rights & Economic Interest: 100%
Black Women Voting Rights & Economic Interest: 35.06%
BDG's & BBOS: 51.30%
Black New Entrants: 31.83%

Black Voting Rights & Economic Interest: 98.17%
Black Women Voting Rights & Economic Interest: 35.06%
BDG's & BBOS: 51.30%
Black New Entrants: 31.83%

Black Voting Rights: 85.59%
Black Women Voting Rights: 31.79%
Black Economic Interest: 84.50%
Black Women Economic Interest: 31,18%
BDG's & BBOS: 38,48%
Black New Entrants: 23,87%